

TROUBLE SHOOTING

Instructions relating to heating (*) are applicable only to "HEAT & COOL MODEL" (Reverse Cycle).

Before requesting service, perform the following checks:

	Symptom	Cause and Action
NORMAL FUNCTION	Doesn't operate immediately.	<ul style="list-style-type: none"> If the unit is stopped and then immediately started again, the compressor will not operate for about 3 minutes, in order to prevent fuse blowouts. Whenever the electrical breaker is turned off them on again, the protection circuit will operate for about 3 minutes, preventing unit operation during that period.
	Noise is heard.	<ul style="list-style-type: none"> During operation and immediately after stopping the unit, the sound of water flowing in the air conditioner's piping may be heard. Also, noise may be particularly noticeable for about 2 to 3 minutes after starting operation (sound of coolant flowing). During operation, a slight squeaking sound may be heard. This is the result of minute expansion and contraction of the front cover due to temperature changes. *During Heating operation, a sizzling sound may be heard occasional. This is produced by the Automatic Defrosting operation.
	Smells.	<ul style="list-style-type: none"> Some smell may be emitted from the indoor unit. This smell is the result of room smells (furniture, tobacco, etc.) which have been taken into the air conditioner.
	Mist or steam are emitted.	<ul style="list-style-type: none"> During Cooling operation or Dry operation, a thin mist may be seen emitted from the indoor unit. This results from the sudden cooling of room air by the air emitted from the air conditioner, resulting in condensation and misting. *During Heating operation, the outdoor unit's fan may stop, and steam may be sent rising from the unit. This is due to Automatic Defrosting operation.
	Airflow is weak or stops.	<ul style="list-style-type: none"> *When Heating operation is started, indoor unit's fan may temporarily stop to allow internal parts to warm up. *During Heating operation, if the room temperature rises above the set temperature, the outdoor unit will stop, and the indoor unit's fan will stop. If you wish to warm the room further, set the temperature for a higher setting. *During Heating operation, the unit will temporarily stop operation (between 2 and 16 minutes) as the Automatic Defrosting mode operates. During Automatic Defrosting operation, the OPERATION indicator will flash. The fan may operate at very low speed during Dry operation or when the unit is monitoring the room temperature. In the monitor AUTO operation, the fan will operate at very low speed.
	Water is produced from the outdoor unit.	<ul style="list-style-type: none"> *During Heating operation, water may be produced from the outdoor unit due to Automatic Defrosting operation.
CHECK ONCE MORE	Doesn't operate at all.	<ul style="list-style-type: none"> Has there been a power failure? Has a fuse blown out, or a circuit breaker been tripped? Is the main power switch set to the OFF position? Is the timer operating?
	Poor Cooling (or *Heating) performance.	<ul style="list-style-type: none"> Is the air filter dirty? Are the air conditioner's intake grille or outlet port blocked? Is there a window or door open? In the case of Cooling operation, is a window allowing bright sunlight to enter? (Close the curtains.) In the case of cooling operation, are there heating apparatus and computers inside the room, or are there too many people in the room?
	The unit operates differently from the remote controller's setting.	<ul style="list-style-type: none"> Are the remote controller's batteries dead? Are the remote controller's batteries loaded properly?

If the problem persists after performing these checks, or if you notice burning smells, or the TIMER indicator flashes, immediately stop operation, turn off the electrical breaker and consult authorized service personnel.

SPECIFICATIONS

MODEL	AU□7UF	AU□9UF	AU□12UF	AU□14UF	AU□18UF
POWER	220 - 240 V ~ 50 Hz				
COOLING CAPACITY [kW]	2.15	2.80	3.60	4.00	5.00
HEATING CAPACITY [kW]	2.45	3.10	4.10	4.50	5.45
DIMENSION & WEIGHT					
HEIGHT [mm]	230				
WIDTH [mm]	570				
DEPTH [mm]	570 + 70				
WEIGHT [kg]	18				

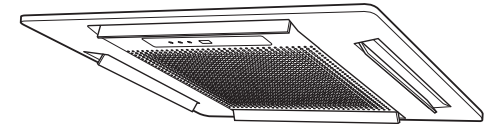
Acoustic Noise Information : The maximum sound pressure level is less than 70 dB (A) for both indoor unit and outdoor unit. According to IEC 704-1 and ISO 3744.

AIRSTAGE™

AIR CONDITIONER

KEEP THIS OPERATING MANUAL FOR FUTURE REFERENCE

COMPACT CASSETTE TYPE



P/N 9372840016 **English**

FUJITSU GENERAL LIMITED

OPERATING MANUAL

SAFETY PRECAUTIONS

Before using the appliance, read these "PRECAUTIONS" thoroughly and operate in the correct way. The instructions in this section all related to safety; be sure to maintain safe operating conditions.

⚠ DANGER!	This mark indicates procedures which, if improperly performed, are most likely to result in the death of or serious injury to the user or service personnel.
<ul style="list-style-type: none"> Do not attempt to install this air conditioner by yourself. This unit contains no user-serviceable parts. Always consult authorized service personnel for repairs. When moving, consult authorized service personnel for disconnection and installation of the unit. 	<ul style="list-style-type: none"> Do not become overexposed to cold air by staying in the direct path of the airflow of the air conditioner for extended periods of time. Do not insert fingers or objects into the outlet port or intake grilles. Do not start and stop air conditioner operation by turning off the electrical breaker or disconnecting the power supply plug and so on. Take care not to damage the power supply cord.
⚠ WARNING!	This mark indicates procedures which, if improperly performed, might lead to the death or serious injury of the user.
<ul style="list-style-type: none"> If a problem (burning smell, etc.) occurs, turn off the electrical breaker immediately to stop operation, and then consult an authorized service personnel. 	<ul style="list-style-type: none"> Merely turning off the unit's power switch will not completely disconnect the unit from the power source. Always be sure to turn off the electrical breaker to ensure that power is completely off.
⚠ CAUTION!	This mark indicates procedures which, if improperly performed, might possibly result in personal harm to the user, or damage to property.
<ul style="list-style-type: none"> Provide occasional ventilation during use. Do not install and direct air flow at fireplaces or heating apparatus. Do not climb on, or place objects on, the air conditioner. Do not hang objects from the indoor unit. Do not set flower vases or water containers on top of air conditioners. Do not expose the air conditioner directly to water. Do not operate the air conditioner with wet hands. Do not pull the power supply cord. Turn off power source when not using the unit for extended periods. Always turn off the electrical breaker whenever cleaning the air conditioner or the air filter. When removing and replacing the air filters, be sure not to touch the heat exchanger, as personal injury may result. Take care to prevent infants from accidentally swallowing batteries. When not using the remote controller for an extended period, remove the batteries to avoid possible leakage and damage to the unit. If leaking battery fluid comes in contact with your skin, eyes, or mouth, immediately wash with copious amount of water, and consult your physician. 	<ul style="list-style-type: none"> Dead batteries should be removed immediately and disposed of properly, either in a battery collection receptacle or to the appropriate authority. Do not attempt to recharge dry batteries. Connection valves become hot during Heating; handle with care. Check the condition of the installation stand for damage. Do not place animals or plants in the direct path of the air flow. When restarting after a long period of disuse in winter, do; Turn the power switch on at least 12 hours before starting the unit. Do not drink the water drained from the air conditioner. Do not use in applications involving the storage of foods, plants or animals, precision equipment, or art works. Do not apply any heavy pressure to radiator fins. Operate only with air filters installed. Do not block or cover the intake grille and outlet port. Ensure that any electronic equipment is at least one meter away from either the indoor or outdoor units. When installing the indoor and outdoor unit, take precautions to prevent access to infants. Do not use inflammable gases near the air conditioner.

OPERATING TIPS

Heating performance

This air conditioner operates on the heat-pump principle, absorbing heat from outdoor air and transferring that heat indoors. As a result, the operating performance is reduced as outdoor air temperature drops. If you feel that insufficient heating performance is being produced, we recommend you use this air conditioner in conjunction with another kind of heating appliance.

Heat-pump air conditioners heat your entire room by recirculating air throughout the room, with the result that some time may be required after first starting the air conditioner until the room is heated.

Cooling / heating priority (J series only)

- If another indoor unit in the same system is already operating in the cooling mode or dry mode, heating mode settings cannot be performed.
- If another indoor unit in the same system is already operating in the heating mode, cooling mode or dry mode settings cannot be performed.

Oil recovery operation

Periodically, the oil recovery operation is performed in order to return compressor oil to the outdoor unit. Operation is stopped during this oil recovery operation. During oil recovery operation, the OPERATION indicator (red) will flash.

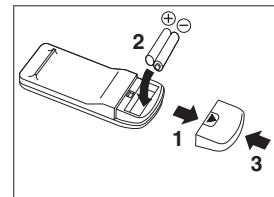
Microcomputer-controlled Automatic Defrosting

When using the Heating mode under conditions of low outdoor air temperature high humidity, frost may form on the outdoor unit, resulting in reduced operating performance. In order to prevent this kind of reduced performance, this unit is equipped with a Microcomputer-controlled Automatic Defrosting function. If frost forms, the air conditioner will temporarily stop, and the defrosting circuit will operate briefly (for about 2 to 16 minutes).

During Automatic Defrosting operation, the OPERATION indicator (red) will flash.

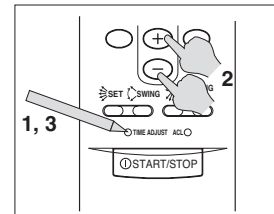
PREPARATION

LOAD BATTERIES (R03/LR03 x 2)



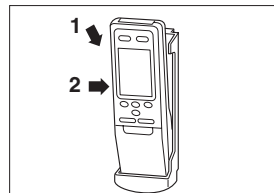
1. Press and slide the lid.
2. Insert batteries.
Be sure to follow the polarity markings indicated in the compartment.
3. Slide back the lid.

SET THE CURRENT TIME

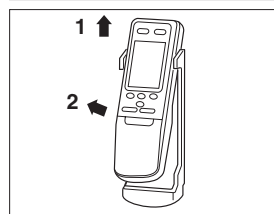


1. Press the TIME ADJUST button.
2. Press the + / - button.
3. Press the TIME ADJUST button.

REMOTE CONTROLLER HOLDER



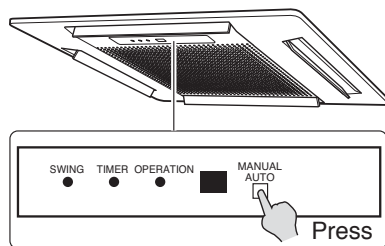
- To set the remote controller in the holder**
1. Insert.
 2. Press in.



- To take out the remote controller from the holder**
1. Slide up.
 2. Pull out.

MANUAL AUTO OPERATION

Use the MANUAL AUTO operation when the remote controller is lost or unavailable.



Press the MANUAL AUTO button on the main unit control panel.

To stop operation, press the MANUAL AUTO button again.

NOTES

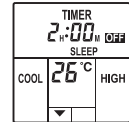
- Each press of the MANUAL AUTO button alternates operation and stop.
- When the air conditioner is operated from the main unit, it will operate under the same conditions as the AUTO mode is selected on the remote controller.
- The fan speed is selected to "AUTO" and the temperature setting will be set to 23 °C.

OPERATION

SLEEP TIMER

To set or change the SLEEP Timer

1. Press the SLEEP button.
2. Press the + / - button.
Adjust the OFF TIME.



To cancel the SLEEP Timer

Press the SLEEP button.

Select "TIMER RESET".

The air conditioner will return to normal operation.

MASTER CONTROL

Press the MASTER CONTROL button while in operation.

NOTES → AUTO → COOL → DRY → FAN → HEAT
(Select HEAT or COOL automatically.)

TEMPERATURE

Press the + / - button while in operation.

NOTES Temperature setting range
 AUTO 18 to 30 °C
 HEAT 16 to 30 °C
 COOL/DRY ... 18 to 30 °C
 The thermostat setting should be considered a standard value, and may differ somewhat from the actual room temperature.

AIR DIRECTION (UPPER AND LOWER)

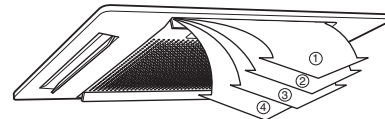
Press the SET button while in operation.

For swing operation:

Press the SWING button while in operation.

Stop the setting by pressing it again.

NOTES Range of swing
 The range of swing is relative to the currently set airflow direction.



NOTES

- (1) The remote controller must be pointed at signal receiver to operate correctly.
- (2) Operating range : About 7 meters.
- (3) Beeping sound
 - When a signal is properly received by the air conditioner, a beeping sound will be heard twice.
 - If an invalid signal is received by the air conditioner, a beeping sound will be heard 5 times.
 - If no beeping sound is heard, press the remote controller button again.
- (4) The buttons except the SLEEP, TIME ADJUST and ACL buttons can only be selected while in operation mode.

(5) PROGRAM timer

- The PROGRAM timer allows you to integrate OFF timer and ON timer operations in a single sequence.
- The first timer function to operate will be the one set nearest to the current time.

(6) SLEEP timer

To prevent excessive warming or cooling during sleep, the SLEEP timer function automatically modifies the set temperature in accordance with the time setting. When the set time has elapsed, the air conditioner completely stops.

(7) When connecting with other remote controllers, the indoor unit might be controlled by the other remote controllers.

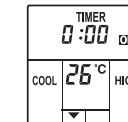
(8) The wired remote controller or the simple remote controller can also be used with this unit.

ON / OFF TIMER

1. Press the TIMER button.
Select "OFF TIMER" or "ON TIMER".

NOTES → RESET → OFF TIMER → ON TIMER
 PROGRAM TIMER (OFF ← ON, OFF → ON)

2. Press the + / - button.
Adjust the OFF or ON TIME.

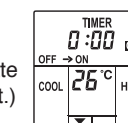


PROGRAM TIMER

To set or change the PROGRAM Timer

1. Press the TIMER button.
Select "OFF TIMER".
2. Press the + / - button.
Adjust the OFF time.
3. Repeat Step 1 and 2 to adjust ON time.

4. Press the TIMER button.
Select "PROGRAM TIMER".
(If the ON timer has been selected to operate first, the unit will stop operating at this point.)



To cancel the PROGRAM Timer

Press the TIMER button.

Select "TIMER RESET".

The air conditioner will return to normal operation.

FAN SPEED

Press the FAN CONTROL button while in operation.

NOTES → AUTO → HIGH → MED → LOW
(Select the fan speed automatically.)

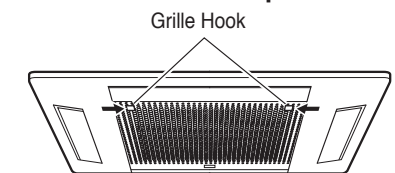
START / STOP

Each press of the START/STOP button alternates operation and stop.

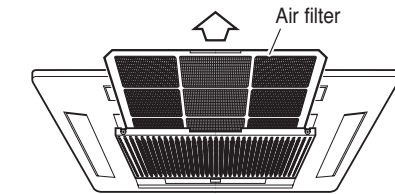
CLEANING AND CARE

CLEANING THE AIR FILTER

1. Push the intake grille's hooks inward towards the center of the unit to open the intake grille.



2. Pull out the filter from the intake grille.

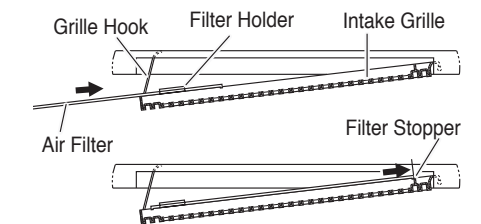


3. Clean the air filters.

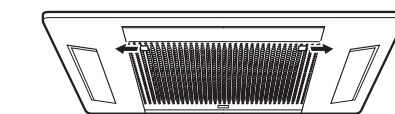
Remove the dust from the air filters by vacuuming or washing them. After washing, be sure to allow it to dry thoroughly in a shady place before reinstalling.

4. Re-attach the air filters to the intake grille.

- ① Replace the air filter into its holder.
- ② Make sure that the air filter makes contact with the filter stopper when it is replaced into its holder.



5. Close the intake grille and push the intake grille's hooks outward.



NOTES

- When used for extended periods, the unit may accumulate dirt inside, reducing its performance. We recommend that the unit be inspected regularly, in addition to your own cleaning and care.
- For more information, consult authorized service personnel.
- Dust can be cleaned from the air filter either with a vacuum cleaner, or by washing the filter in a solution of mild detergent and warm water.
- When cleaning the unit, do not use water hotter than 40 °C, harsh abrasive cleansers, or volatile agents like benzene or thinner.
- Do not expose the unit to liquid insecticides or hairsprays.
- During periods of normal use, the air filters should be cleaned every two weeks.
- When shutting down the unit for one month or more, first allow the fan mode to operate continuously for about one-half day to allow internal parts to dry thoroughly.